



User Guide

Object	<i>This document briefly describes the features and uses offered by the Android mobile application DOT_Project.</i>
---------------	---

Summary

1. Download and Installation	4
1.1. Security lift	4
1.2. APK download link	4
1.3. Installation	4
2. Informations	5
3. Presentation of the pages	6
3.1. General information	6
3.1.1. Navigation	6
3.2. HUB BLE.....	6
3.3. ACS BLE	7
3.4. Real Time.....	8
3.5. Check installed ACS BLE	9

Revisions

Version	Date	Contributor(s)	Changes
01.00	19/01/2026	MSA	First Release

Document approval

Version	Redaction	Review	Validation
NAME			
FUNCTION			
DATE			
VISA			

Reference Documents

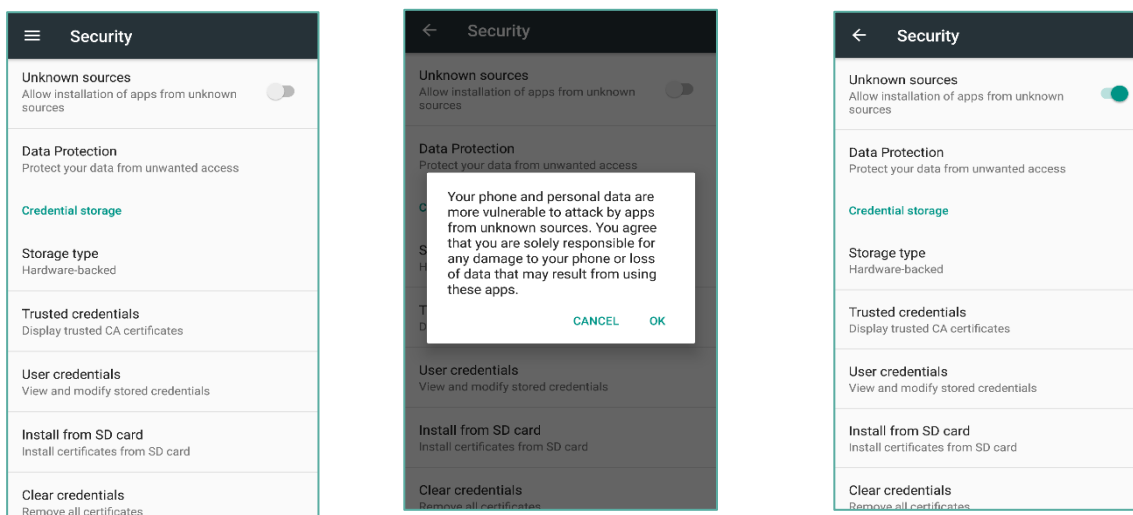
Ref.	Title	Designation

Source : SUPP_UGXXXX_AppName_C3_01.00_FR_YYMM.docx

1. Download and Installation

Allow the installation of apps from unknown sources in your phone's security settings.

1.1. Security lift



1.2. APK download link

Download from the target Android smartphone :

https://downloads.ineo-sense.com/DOT-PROJECT_v1.apk

1.3. Installation

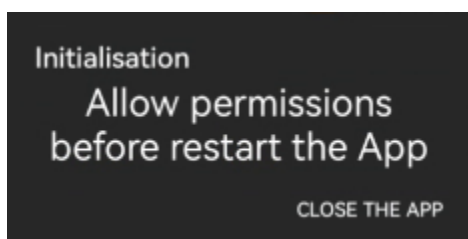
Find the APK file on your smartphone, open it, and follow the instructions.

An icon will be created on the home screen once the installation is complete.

2. Informations

IMPORTANT Bluetooth and GPS positioning are required

When the application is launched for the first time, The various permissions will be requested. Once all permissions have been granted, the user will need to restart the application.



3. Presentation of the pages

3.1. General information

3.1.1. Navigation

For each page, two icons are available to access the next and previous pages :



Except for :

1. HUB BLE -> Check Installed ACS BLE (Button : CHECK ACS BLE INSTALLED)
2. ACS BLE -> Check installed ACS BLE (Button : FINISH CONFIG OF ALL ACS BLE)
3. Check installed ACS BLE -> Previous page (HUB BLE or ACS BLE) (Button : QUIT)

3.2. HUB BLE

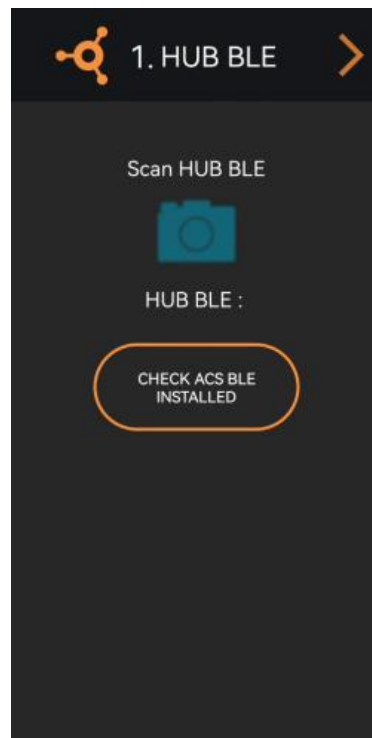
This page allows you to :

1. Scan the HUB BLE Serial Number (Camera icon)
2. Access the list of ACS BLE installed on this BLE HUB (Button : CHECK ACS BLE INSTALLED)

This page show the Serial Number of scanned device next to : HUB BLE

Note

You don't need to scan a HUB BLE, the ACS BLE will work alone, the screen : « Check installed ACS BLE » will not be openable, the button : « CHECK ACS BLE INSTALLED » will be disable.



3.3. ACS BLE

This page allows you to :

1. Scan the ACS BLE Serial Number (Camera icon)
2. Install and initialize device references (Button : INSTALL + REF)
3. Do a Initialization of device references without install (Button : MANUAL FORCE REF)
4. Clear the List of Installed ACS BLE in the app (Trash icon)
5. Complete the ACS BLE configuration phase and proceed to the HUB BLE configuration phase. (Button : FINISH CONFIG OF ALL ACS BLE)

This page show the Serial Number of scanned device next to : ACS BLE

Note ***You don't need to scan a HUB BLE, the ACS BLE will work alone, the screen : « Check installed ACS BLE » will not be openable, the button : « FINISH CONFIG OF ALL ACS BLE » will be disable.***

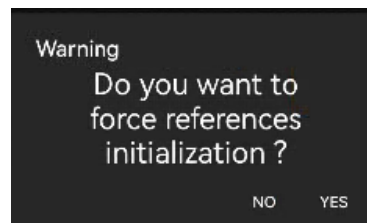


3.4. Real Time

This page displays a summary of the installed ACS BLE devices and shows the status of the door on which the ACS BLE is installed.



Clicking on the ACS BLE information display will trigger a request to initialize references.



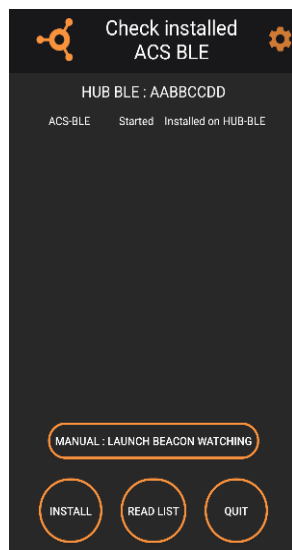
3.5. Check installed ACS BLE

This page has several functions :

- If it has been open since : 1. HUB BLE :
 - o Connects to the HUB BLE and reads the list of associated ACS BLE
- If it has been open since : 2. ACS BLE :
 - o Connects to HUB BLE, and starts the device configuration.
 - o Once configured, the application disconnects and listens to the BLE Beacons of the HUB BLE and displays in real time the number of ACS BLE detected and present in the list written during configuration.
 - o Once the set time has elapsed (default 2 minutes, but configurable in the settings icon in the upper right corner of the screen), the application reconnects to the HUB BLE to reconfigure it to normal operating mode.
 - o The list of ACS BLE is read in the HUB BLE, and the application displays their status : « Installed on HUB-BLE » : Red = No, Green = Yes

The user can perform these two actions manually using the buttons : « INSTALL » et « READ LIST ».

The button « MANUAL : LAUNCH BEACON WATCHING » Used to monitor the BLE beacons of the HUB BLE without going through the installation phase.



All button enable

Beacon Watching in progress

